

Gr 12 Indirect Proportions

Question 1

Define indirect proportion

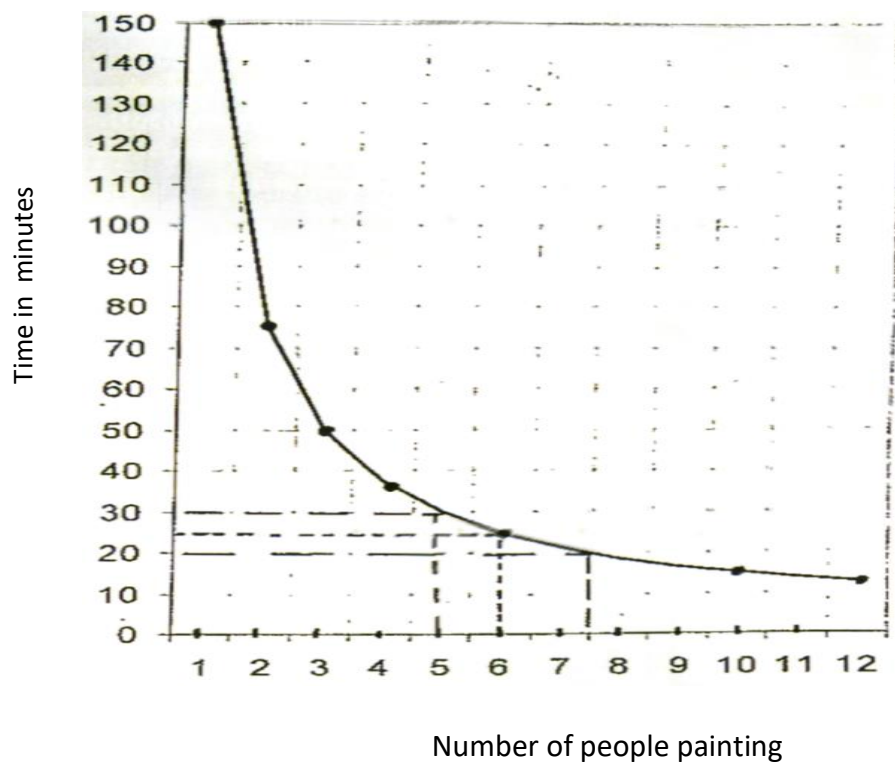
memo

If one variable increases, while the other variable decreases.

Questions 2

Study the graph below and answer the following questions.

Number of people painting a wall



(a)

Provide the table for the above graph.

memo

Number of people	1	2	3	4	5	6	10	12
Time in minutes	150	75	50	37,7	30	25	15	12,5

(b)

What type of data is this? Motivate your answer.

**Memo**

Continuous data, the time is measured.

(c)

Name the dependent variable in this graph

**memo**

Time in minutes

(d)

Name the independent variable in this graph

**memo**

Number of painters

(e)

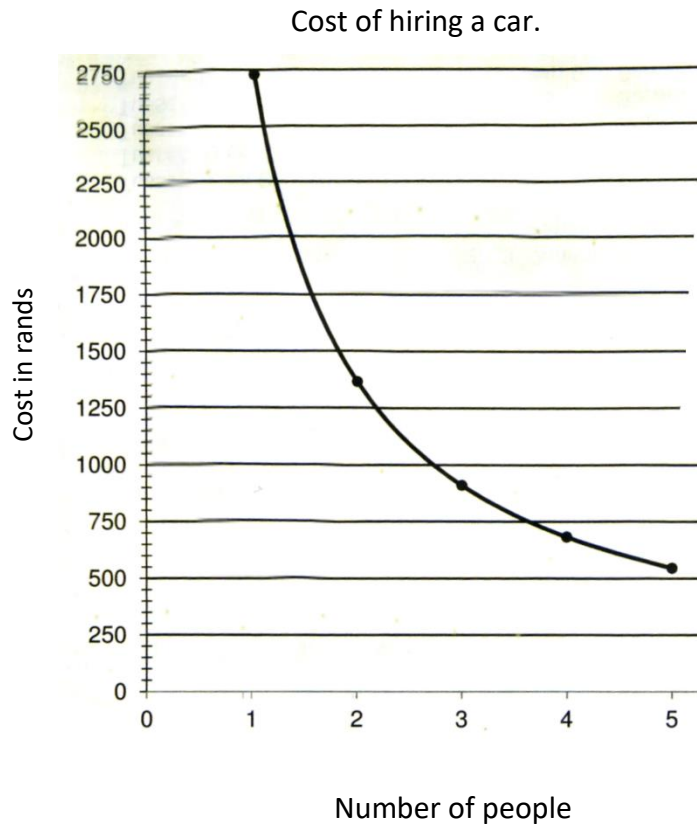
If one multiply the two variables, what will you find?

(f)

You will find that the two variables have a constant product.

Question 3

Study the graph below and answer the following questions.



(a)

Provide the table for the above graph.

memo

Number of people	1	2	3	4	5	6
Cost in rands	2 750	1 375	916,67	687,50	550	458,33

(b)

What type of data is this? Motivate your answer.

Memo

Discrete data, you count the money.

(c)

Name the dependent variable in this graph

memo

Money in rand

(d)

Name the independent variable in this graph

memo

Number of people

(e)

Calculate the constant product if you multiply the two variables.

Memo

R2 750